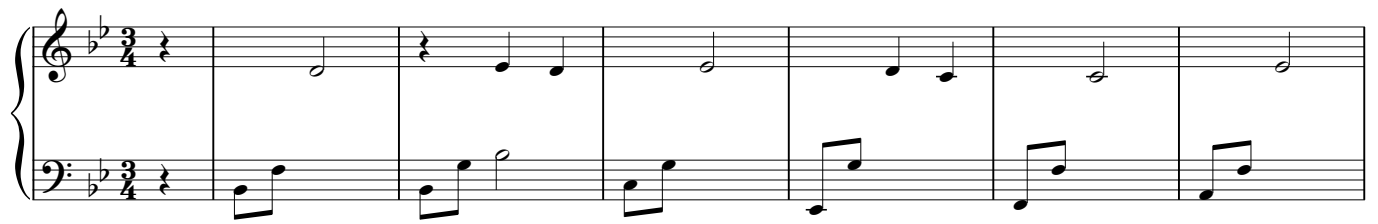


Бог мир так возлюбил

Piano

Moderato



34

Measures 34-36. Treble clef: eighth-note chords and single notes. Bass clef: eighth-note accompaniment.

37

Measures 37-41. Treble clef: eighth-note patterns. Bass clef: eighth-note accompaniment.

42

Measures 42-45. Treble clef: eighth-note chords. Bass clef: eighth-note accompaniment with a triplet in measure 45.

46

Measures 46-49. Treble clef: eighth-note chords. Bass clef: eighth-note accompaniment.

50

Measures 50-53. Treble clef: eighth-note chords. Bass clef: eighth-note accompaniment. Octave markings (8va) are present above measures 51 and 52.

54

Measures 54-57. Treble clef: eighth-note chords. Bass clef: eighth-note accompaniment.

58

Measures 58-62 of a piano piece. The key signature has two flats (B-flat and E-flat). Measure 58 features a treble clef with a half note chord (F4, A-flat4, C5) and a bass clef with a half note chord (B-flat3, D4, F4). Measures 59-60 show a treble clef with a half note chord (F4, A-flat4, C5) and a bass clef with a half note chord (B-flat3, D4, F4). Measure 61 has a treble clef with a half note chord (F4, A-flat4, C5) and a bass clef with a half note chord (B-flat3, D4, F4). Measure 62 has a treble clef with a half note chord (F4, A-flat4, C5) and a bass clef with a half note chord (B-flat3, D4, F4). The piece concludes with a double bar line.

63

Measures 63-66 of a piano piece. The key signature has two flats (B-flat and E-flat). Measure 63 features a treble clef with a half note chord (F4, A-flat4, C5) and a bass clef with a half note chord (B-flat3, D4, F4). Measures 64-65 show a treble clef with a half note chord (F4, A-flat4, C5) and a bass clef with a half note chord (B-flat3, D4, F4). Measure 66 has a treble clef with a half note chord (F4, A-flat4, C5) and a bass clef with a half note chord (B-flat3, D4, F4). The piece concludes with a double bar line.

67

Measures 67-70 of a piano piece. The key signature has two flats (B-flat and E-flat). Measure 67 features a treble clef with a half note chord (F4, A-flat4, C5) and a bass clef with a half note chord (B-flat3, D4, F4). Measures 68-69 show a treble clef with a half note chord (F4, A-flat4, C5) and a bass clef with a half note chord (B-flat3, D4, F4). Measure 70 has a treble clef with a half note chord (F4, A-flat4, C5) and a bass clef with a half note chord (B-flat3, D4, F4). The piece concludes with a double bar line.

71

Measures 71-73 of a piano piece. The key signature has two flats (B-flat and E-flat). Measure 71 features a treble clef with a half note chord (F4, A-flat4, C5) and a bass clef with a half note chord (B-flat3, D4, F4). Measures 72-73 show a treble clef with a half note chord (F4, A-flat4, C5) and a bass clef with a half note chord (B-flat3, D4, F4). The piece concludes with a double bar line.

74

Measures 74-77 of a piano piece. The key signature has two flats (B-flat and E-flat). Measure 74 features a treble clef with a half note chord (F4, A-flat4, C5) and a bass clef with a half note chord (B-flat3, D4, F4). Measures 75-76 show a treble clef with a half note chord (F4, A-flat4, C5) and a bass clef with a half note chord (B-flat3, D4, F4). Measure 77 has a treble clef with a half note chord (F4, A-flat4, C5) and a bass clef with a half note chord (B-flat3, D4, F4). The piece concludes with a double bar line.